

B3 FLANGED PULSE VALVES

E Series



CARACTERISTICS

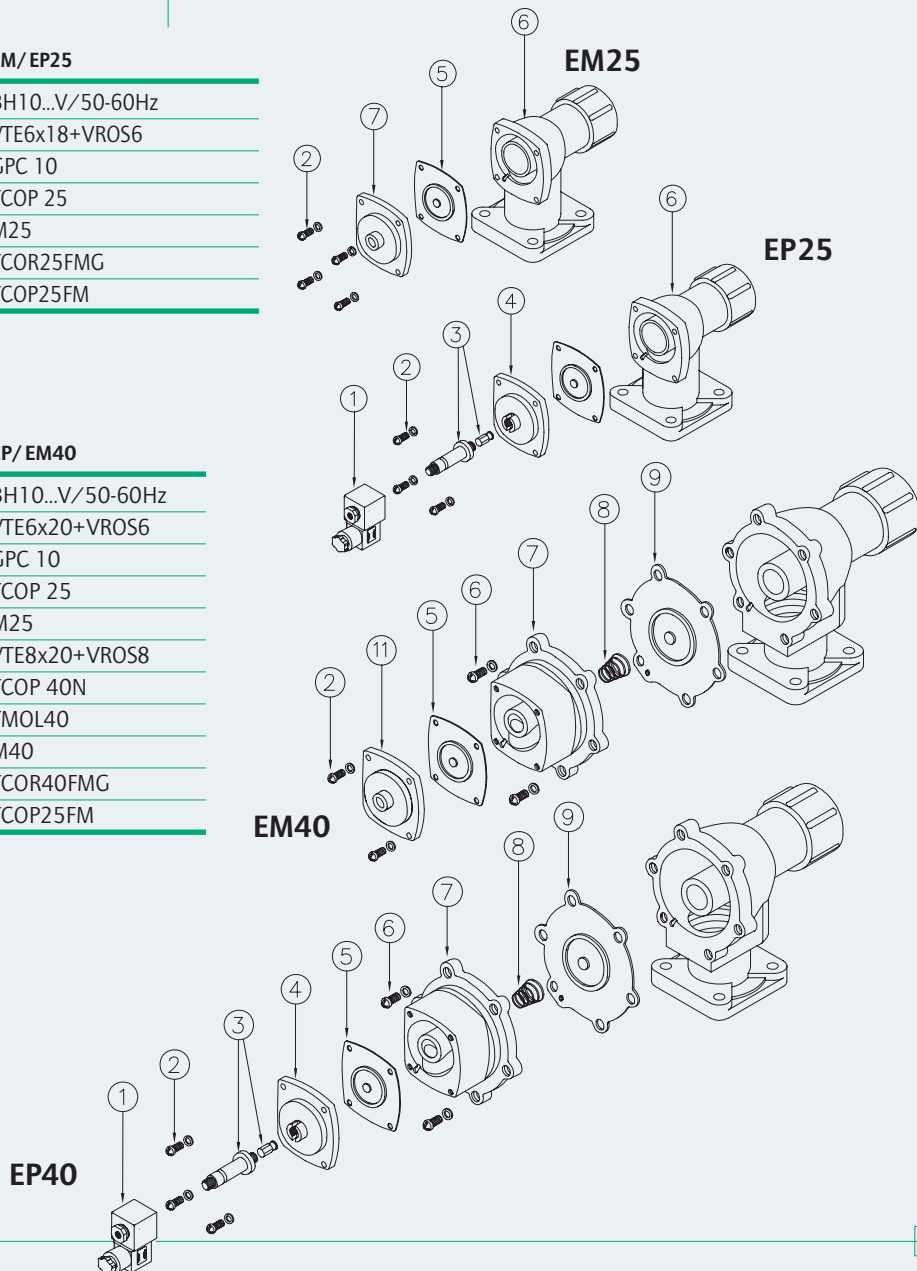
Fluid	Filtered and oilfree compressed air
Temperature range	STD Nitril diaphragm -40°C; +80°C Viton diaphragm -30°C; +200°C
Operating pressure	min 0,5; max 7,5 bar
Body & cover	Die cast aluminium
Core tube	Stainless Steel
Plunger	Stainless Steel
Screws	Stainless Steel
Coil insulation	Class H
Connector	PG 9; IP65 DIN 43650 ISO 4400
Standard voltages	230 -110 - 24V / 50-60VHz 19 VA 24VDC 15W

DESCRIPTION	EM/EP25
1 Coil+Connector	BH10...V/50-60Hz
2 Screws+Washer	VTE6x18+VROS6
3 Pole assembly	GPC 10
4 Cover	TCOP 25
5 Diaphragm	M25
6 Body	TCOR25FMG
7 Cover remote operated	TCOP25FM

EP Versione con pilota integrato
EM Versione con pilota remoto

DESCRIPTION	EP/EM40
1 Coil+Connector	BH10...V/50-60Hz
2 Screws+Washer	VTE6x20+VROS6
3 Pole assembly	GPC 10
4 Cover	TCOP 25
5 Diaphragm	M25
6 Screws + Washer	VTE8x20+VROS8
7 Main cover	TCOP 40N
8 Spring	TMOL40
9 Main diaphragm	M40
10 Body	TCOR40FMG
11 Cover remote operated	TCOP25FM

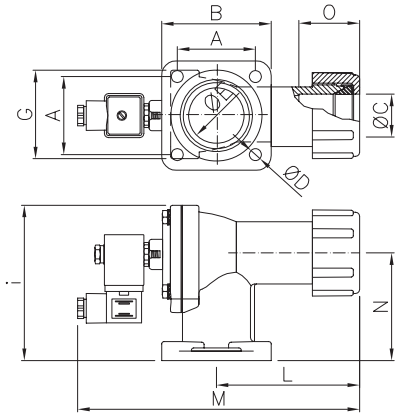
EP Versione con pilota integrato
EM Versione con pilota remoto



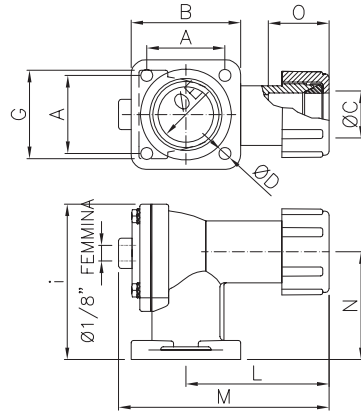
FLANGED PULSE VALVE **B3**

Dimensions mm **E** Series

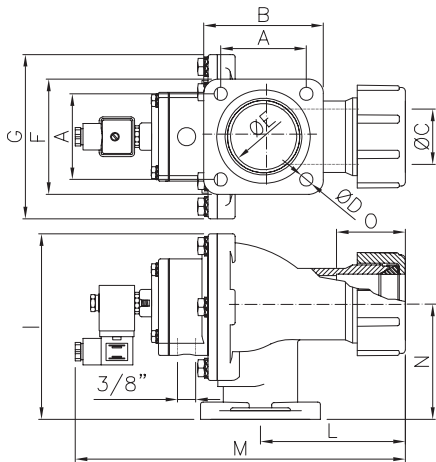
EP25



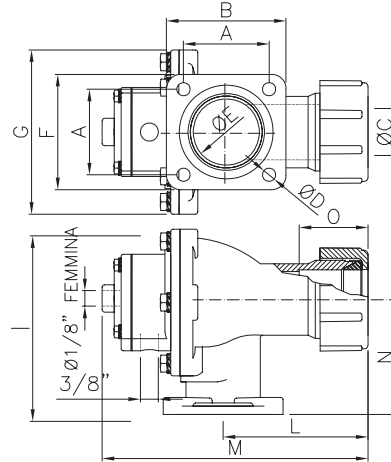
EM25



EP40



EM40



Model	Ø C (nom)	A	B	Ø D	F	G	I	L	M	N	Ø E	Weight (Kg)
EP 25	1"	60	82	9	82	74	119	106	217	81	1 ¹ / ₂	1
EP 40	1 ¹ / ₂ "	72	99	11	96	140	160	115	278	96	2"	2,3
EM 25	1"	60	82	9	82	74	106	106	159	81	1 ¹ / ₂	0,9
EM40	1 ¹ / ₂ "	72	99	11	96	140	160	115	220	96	2"	2,1